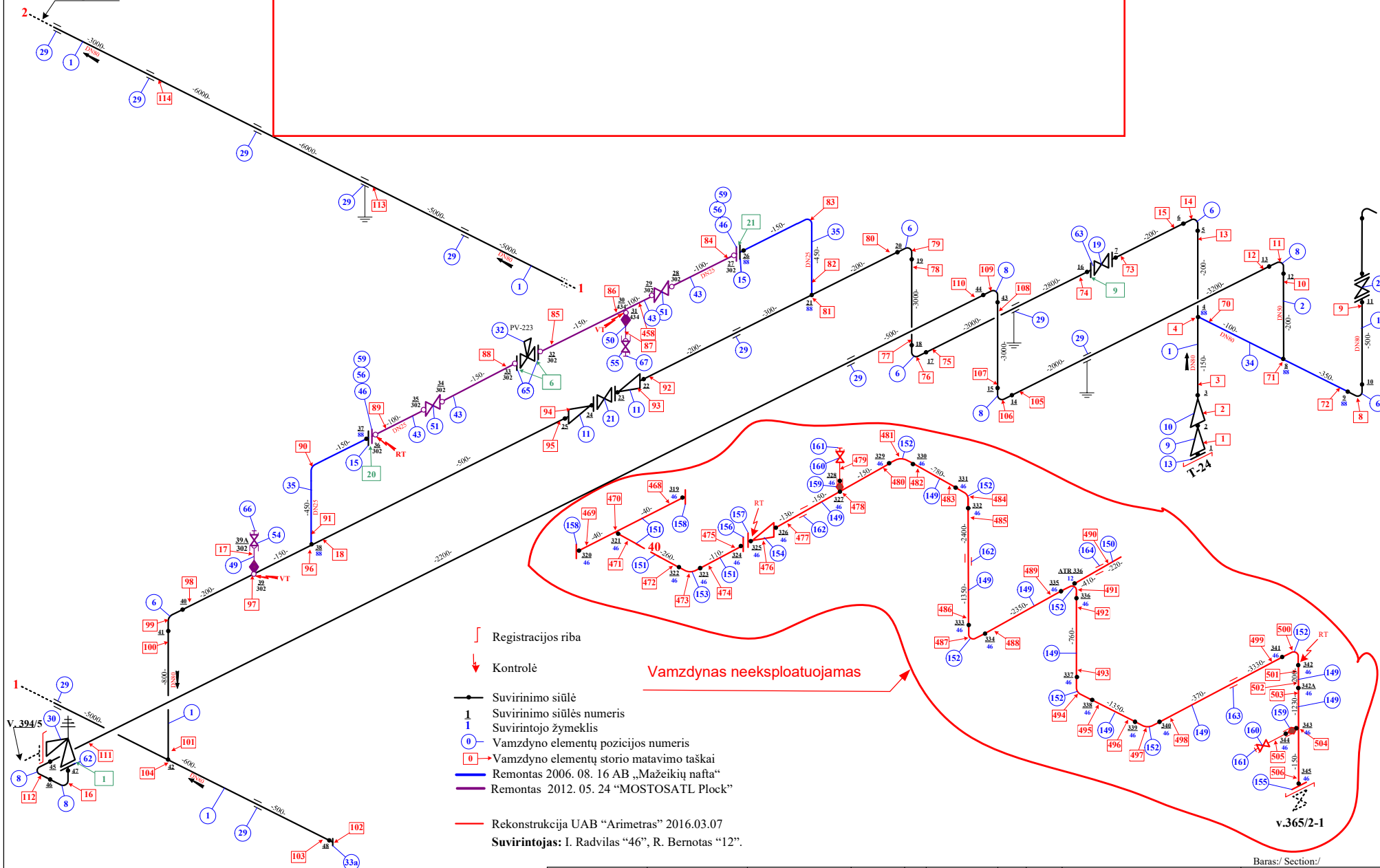


Žr. lapą Nr. 2

Po remonto linijai 365-2-2 HB nebus atliekama. Bus daroma 100% kontrolė.

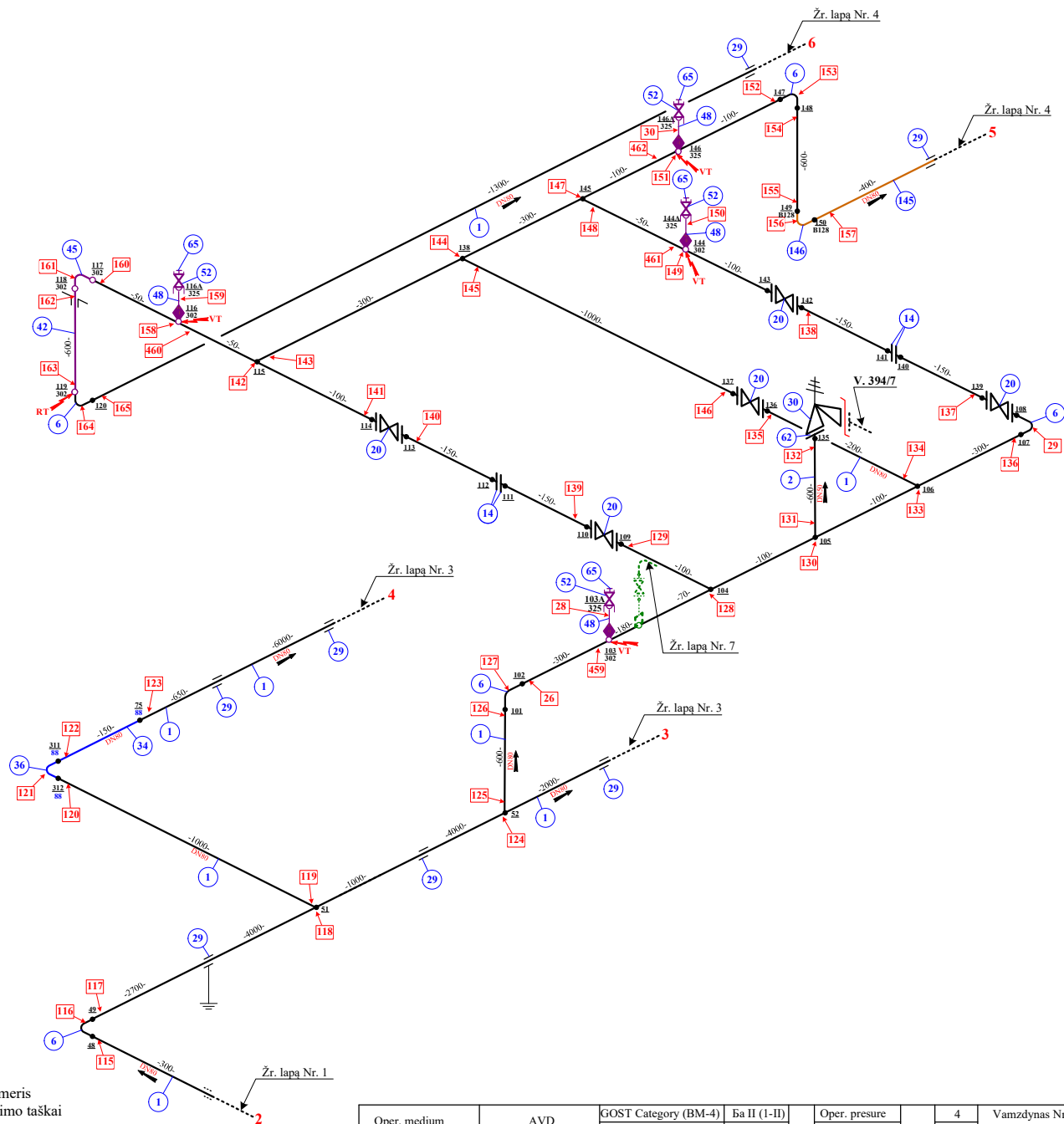
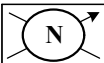


Vamzdynas neeksplatuojamas

v.365/2-1

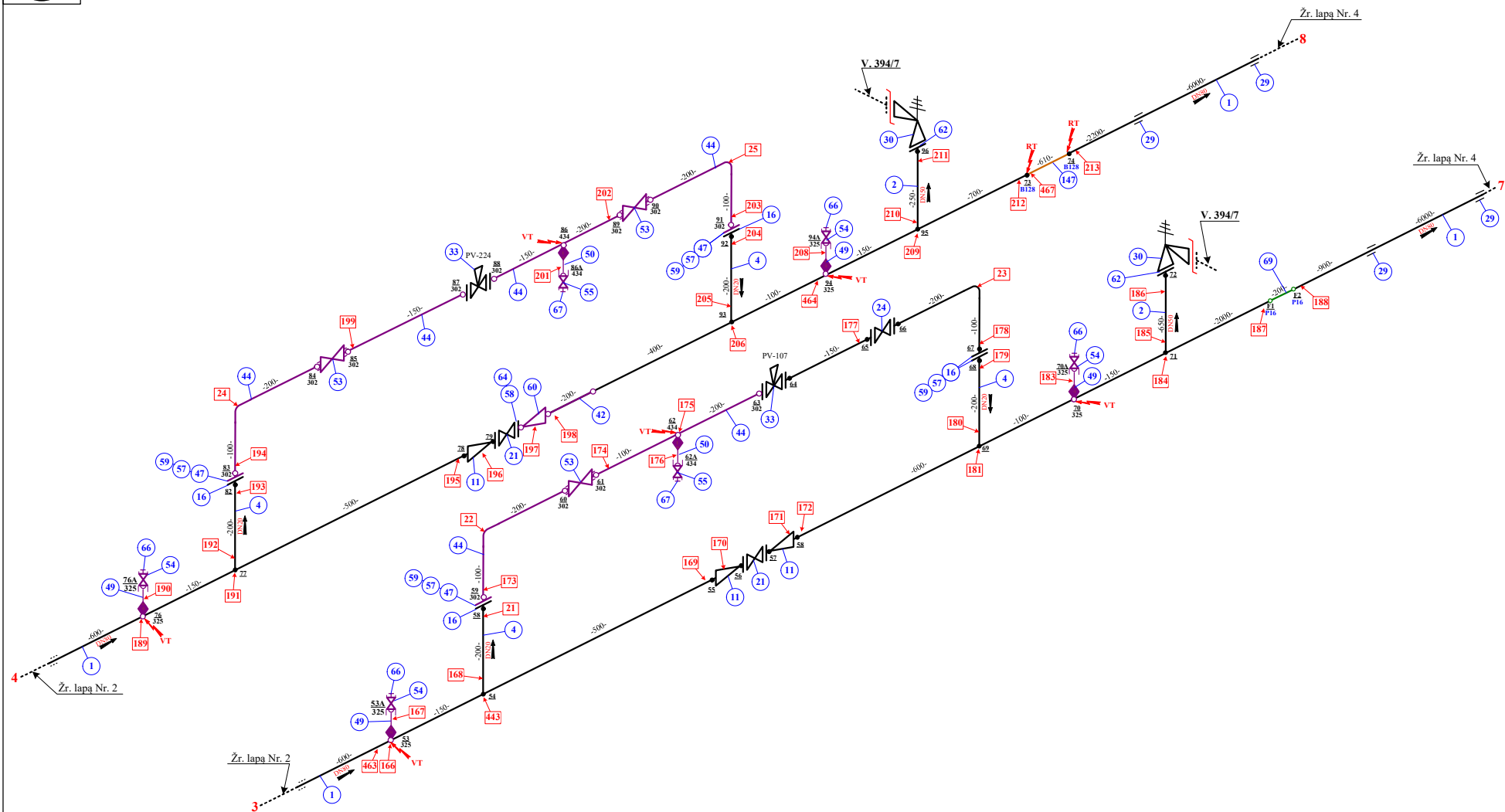
Baras/ Section/
GP-Nr.2 Įrenginys Nr.FÜ









Oper. medium	AVD	GOST Category (BM-4)	Бв II (I-II)	Parameters	Oper. pressure	4	Vamzdynas Nr. :/Pipe line Nr.:/ V.365/2-2	Basis. Section/ GP-Nr.2 I renginys Nr.FU	
Test medium	vanduo	PED Category	--		Desing pressure	8			
Codes	ПД 38.13.004-75	Material	20		Test pressure	11,5	Iš talpos T-24 į žvakės D-4 ir D-5 būdinius degiklius ir labirintinius užsandarinimus	Lapas	Lapų
Calc. No.	----	Insulation	YES		Oper. Temp.	35		Page	Pages
----	----	PWHT	---		Desing Temp.	35		1	6
----	----	Heating	YES		Test Temp.	10+40			



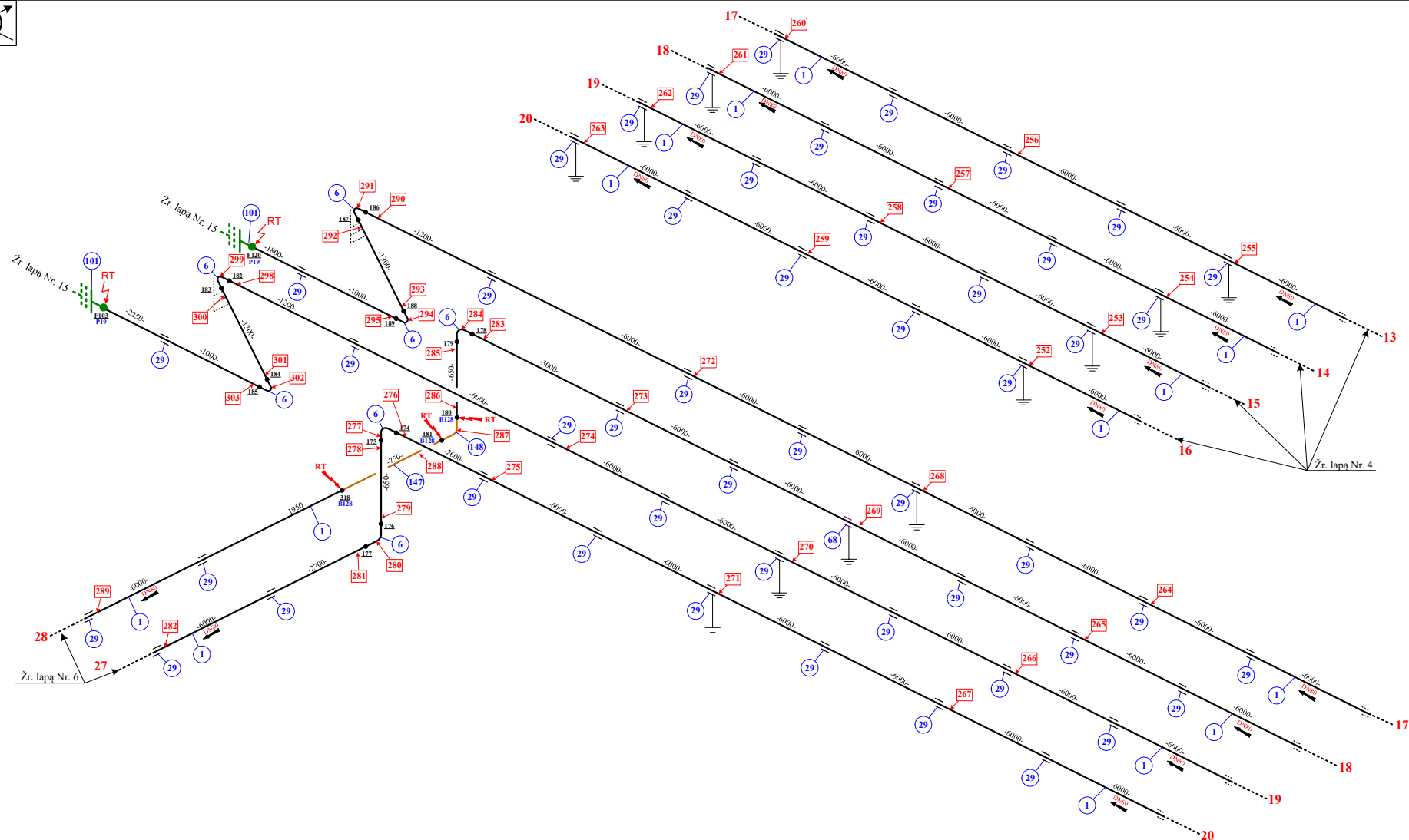
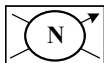
Remontas 2012. 05. MOSTOSATL Plock
Remontas 2012.11.16 UAB "Industrika"
Rekonstrukcija 2012. 12. 06 CKTiS

Oper. medium	AVD	GOST Category (BM-4)	Ба II (I-II)	Parameters	Oper. presure	bar	4	Vamzdynas Nr. :/Pipe line Nr.:/ V.365/2-2	Baras:/ Section:/ GP-Nr.2 Įrenginys Nr.FU
		PED Category	--		Desing pressure		8		
Test medium	vanduo	Material	20		Test pressure		11,5		
Codes	ПД 38.13.004-75	Insulation	YES		Oper. Temp.		35		
Calc. No.	----	PWHT	---		Desing Temp.		35		
----	----	Heating	YES		Test Temp.	10÷40			
Is talpos T-24 į žvakės D-4 ir D-5 būdinčius degiklius ir labirintinius užsandarinimus								Lapas Page	Lapų Pages
								2	17



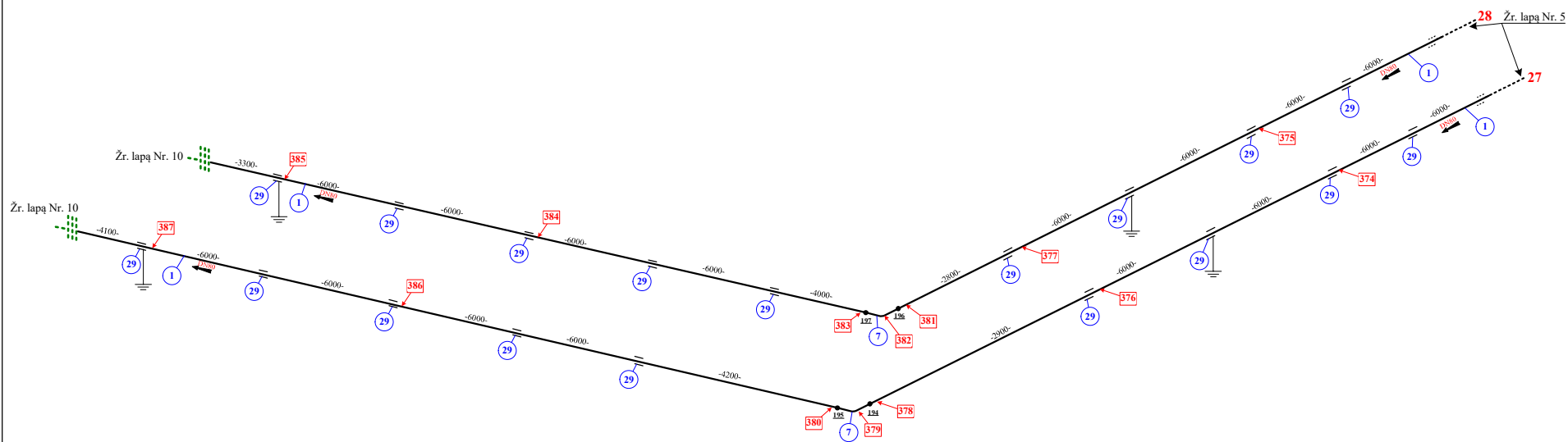
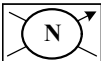
-  Suvirinimo siūlė
-  1 Suvirinimo siūlės numeris
-  0 Suvirintojo žymeklis
-  0 Vamzdinių elementų pozicijos numeris
-  0 Vamzdyno elementų storio matavimo taškai
-  Remontas 2012.05 Mostostal Plock
-  Remontas 2012.12.05 UAB "Industrika"
-  Rekonstrukcija 2012.12.06 CKTis

Oper. medium	AVD	GOST Category (BM-4)	Ia II (I-II)	Parameters	Oper. pressure	bar	4	Vamdynas Nr.: /Pipe line Nr./ V.365/2-2	Baras:/ Section/ GP-Nr.2 Įrenginys Nr.FU
Test medium	vanduo	PED Category	--		Dessing presure		8		
Codes	PJ 38.13.004-75	Material	20		Test presure	11,5			
Calc. No.	----	Insulation	YES		Oper. Temp.	35			
		PHWT	---		Dessing Temp.	35			
		Heating	YES		Test Temp.	10÷40			
Iš talpos T-24 į žvakės D=4 ir D=5 būdinčius degiklius ir labirintinius užsandarinimus								Lapas Page	Lapų Pages
								3	17



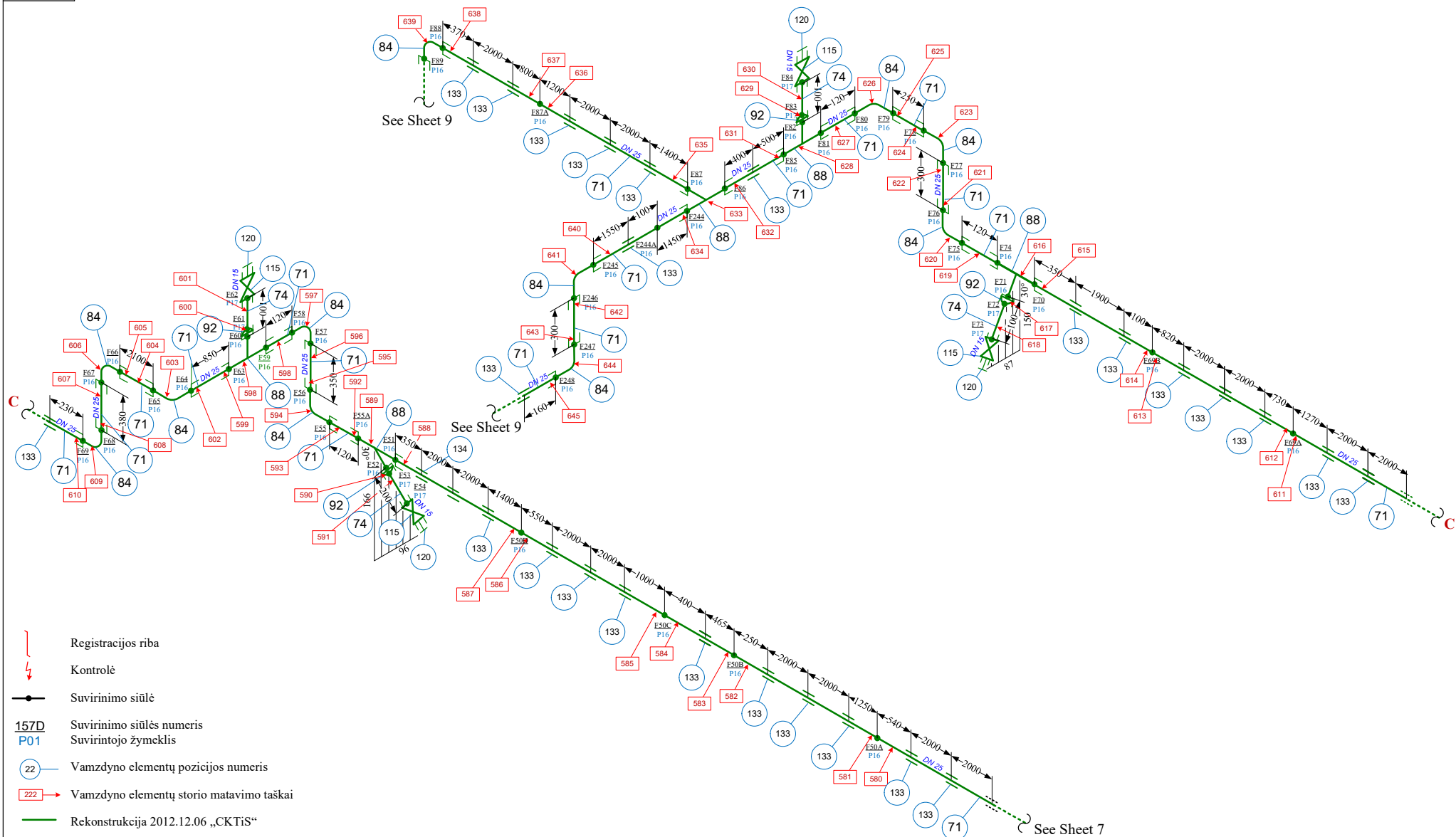
- Registracijos riba
↓ Kontrolė
— Suvirinimo siūlė
1 Suvirinimo siūlės numeris
1 Suvirintojo žymeklis
0 Vamzdyno elementų pozicijos numeris
0 Vamzdyno elementų storio matavimo taškai
— Rekonstrukcija 2012. 12. 06 CKTis


Oper. medium	AVD	GOST Category (BM-4)	Бa II (I-II)	Parameters	Oper. pressure	bar	4	Vamzdynas Nr. :/Pipe line Nr.:/ V.365/2-2	Baras:/ Section:/ GP-Nr.2 Įrenginys Nr.FU	Lapas Page	Lapų Pages
Test medium	vanduo	PED Category	--		Desing pressure	8					
		Material	20		Test pressure	11,5					
Codes	ПД 38.13.004-75	Insulation	YES		Oper. Temp.	°C	35	Iš talpos T-24 į žvakės D-4 ir D-5 būdinių degiklius ir labirintinius užsandarinius			
Calc. No.	----	PWHT	----		Desing Temp.	35					
----	----	Heating	YES		Test Temp.	10÷40					

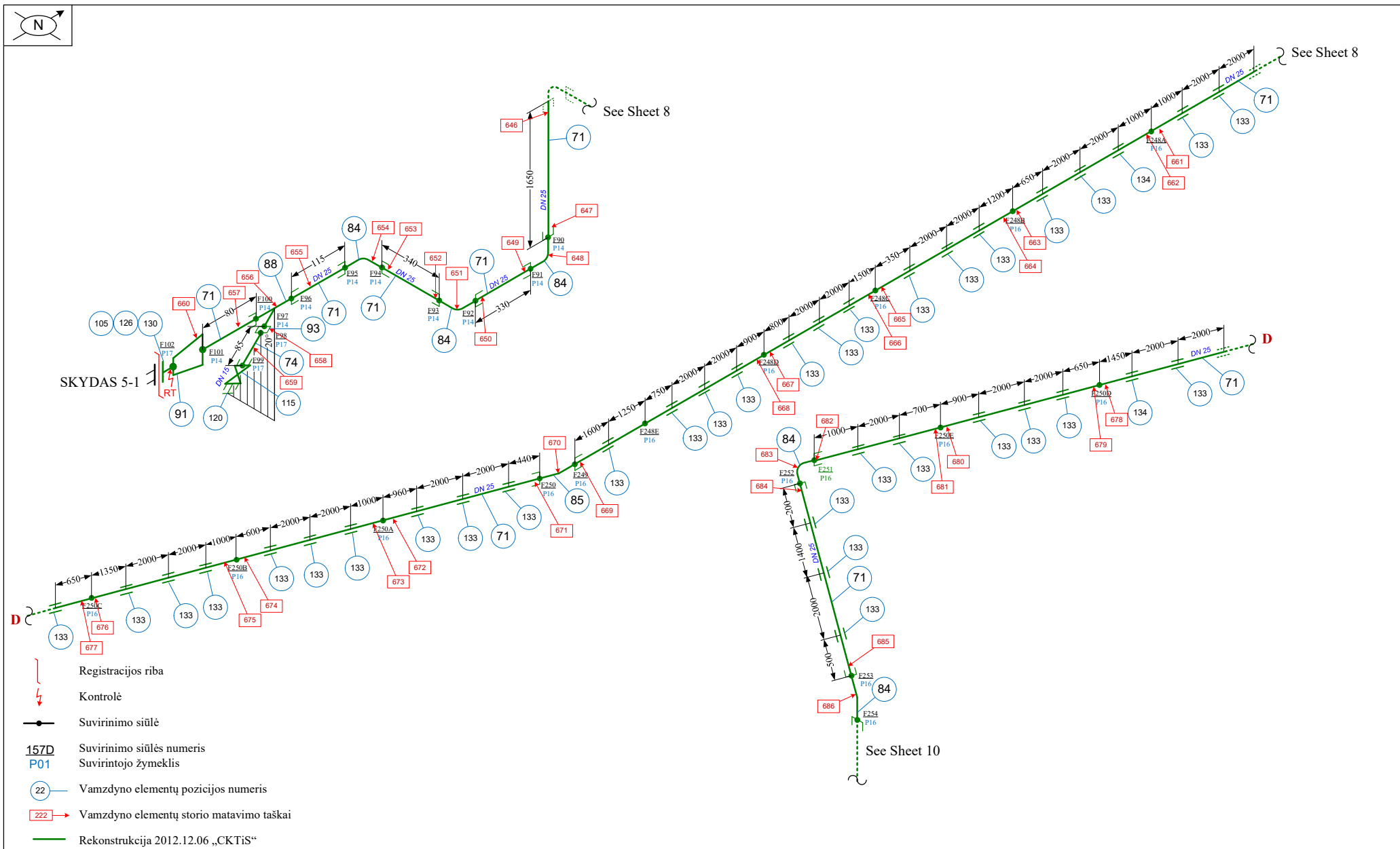



- ┌ Registracijos riba
- ↓ Kontrolė
- Suvirinimo siūlė
- 1 Suvirinimo siūlės numeris
- 1 Suvirintojo žymeklis
- 0 Vamzdyno elementų pozicijos numeris
- 0 Vamzdyno elementų storio matavimo taškai
- Rekonstrukcija 2012. 12. 06 CKTiS

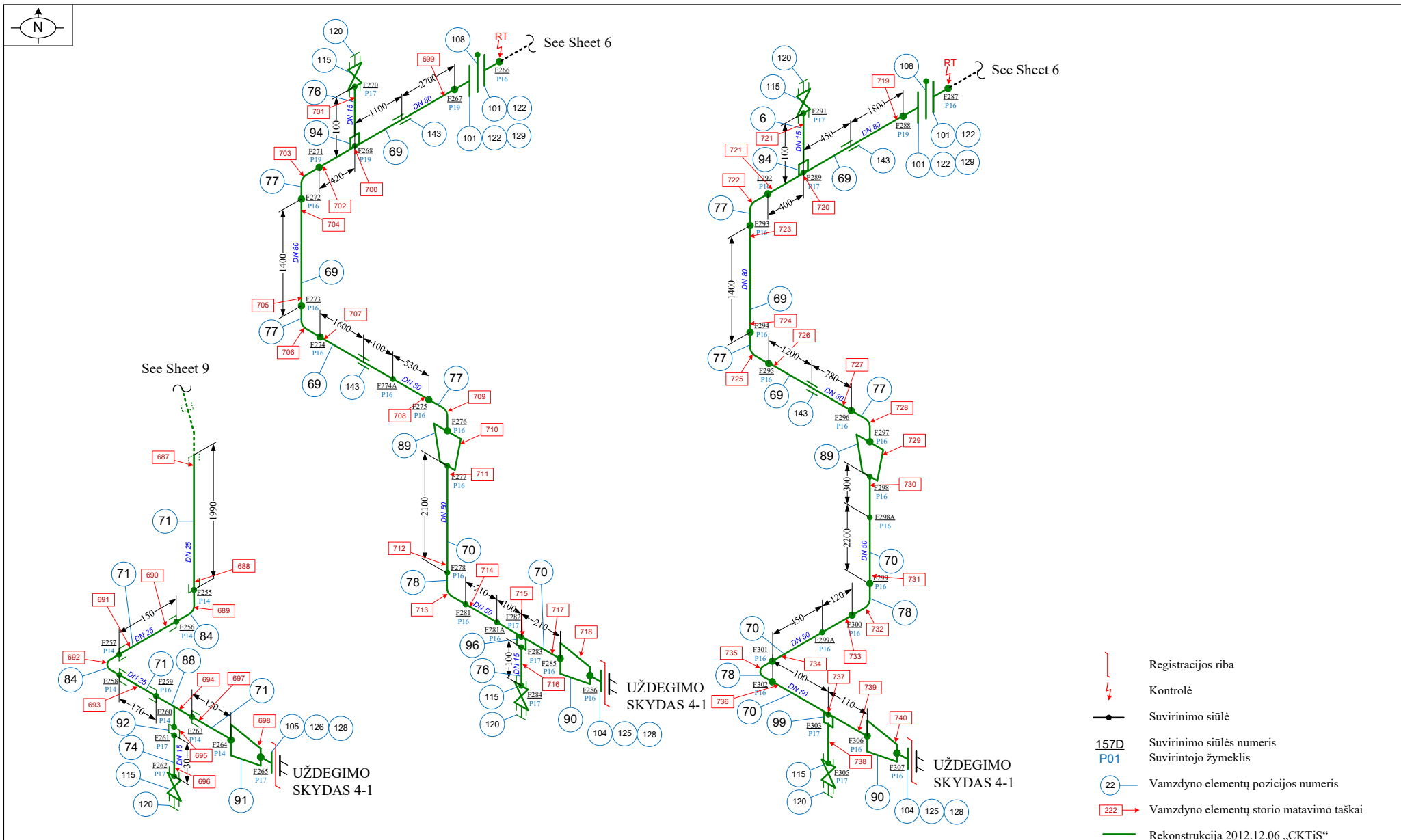
Oper. medium	AVID	GOST Category (BM-4)	Ea II (1-II)	Parameters	Oper. pressure	bar	4	Vamzdynas Nr. :/Pipe line Nr.:/ V.365/2-2	Baras:/ Section/ GP-Nr.2 Įrenginys Nr.FU	Lapas Page	Lapų Pages
Test medium	vanduo	PED Category	--		Desing pressure	bar	8				
Codes	ПД 38.13.004-75	Material	20		Test pressure	°C	11,5				
Calc. No.	----	Insulation	YES		Oper. Temp.	°C	35				
----	----	PWHT	---		Desing Temp.	°C	35				
----	----	Heating	YES			10÷40	IS talpos T-24 į žvakės D-4 ir D-5 būdinius degiklius ir labirintinius užsandarinimus			6	17

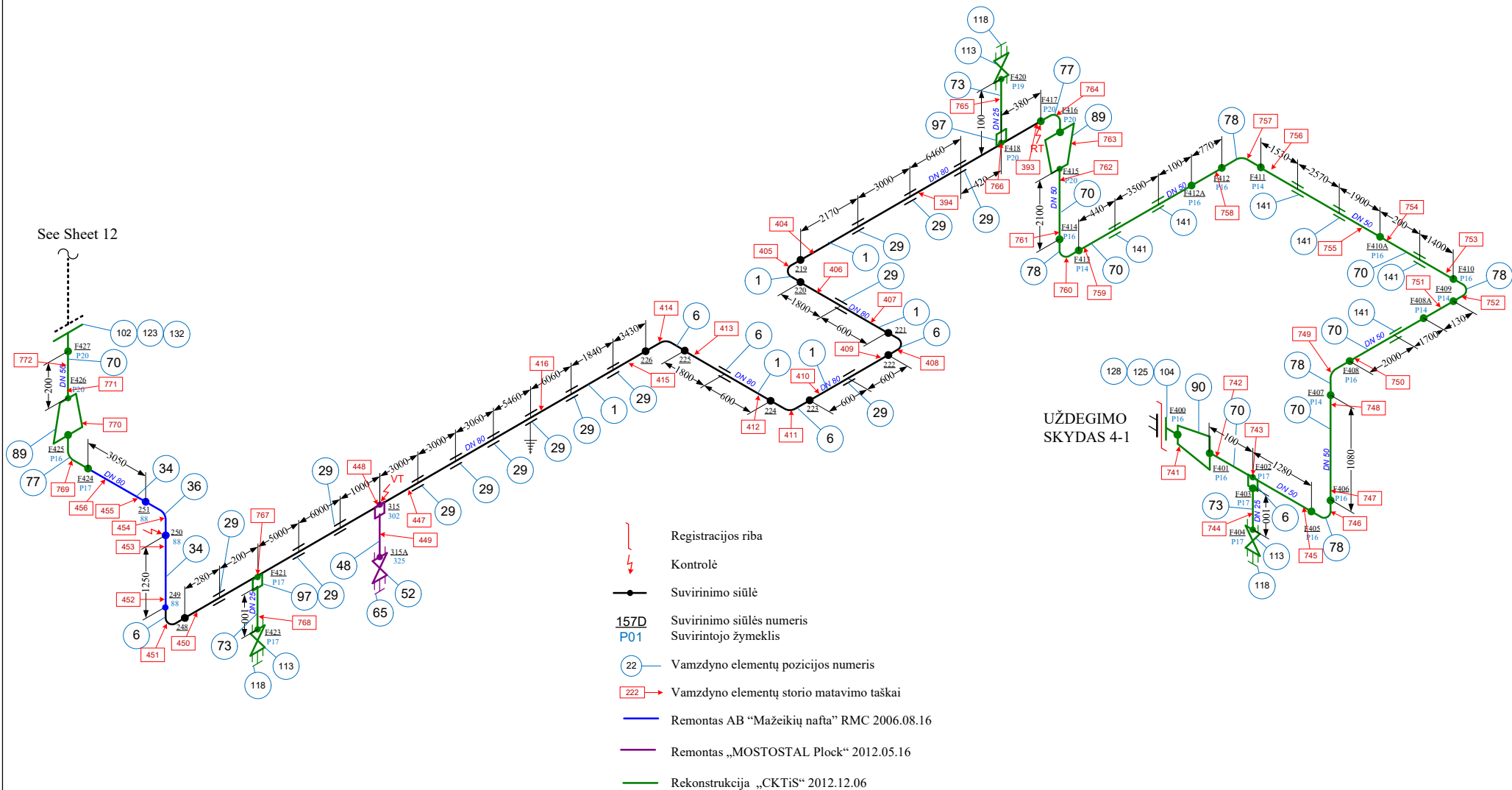



	Oper. medium	AVD	GOST Category	Ba-II	Parameters	Oper. pressure	bar	4,0	Vamzdynas Nr. :/Pipe line Nr.:/ V.365/2-2	Baras:/ Section:/ GP-2, Įrenginys FŪ	Vamzdynas 365/2-2 į skydines 4-1; 5-1 ir žvakės D-4; D-5	Lapas Page	Lapų Pages
			PED Category	I-II		Design pressure		8,0					
	Test medium	Vanduo	Material	p120		Test pressure		12,0					
	Codes	RD.38.13.004-86	Insulation	YES		Oper. temp.	°C	35					
	Calc. No.	LST EN 13480-1	PWHT	NO		Design temp.		35					
	-	-	Heating	YES		Test temp.		10÷40					

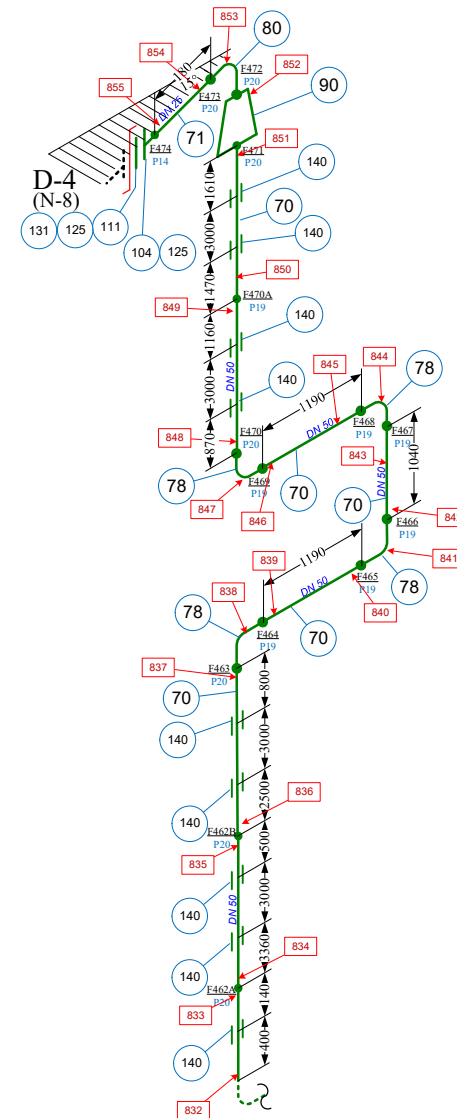
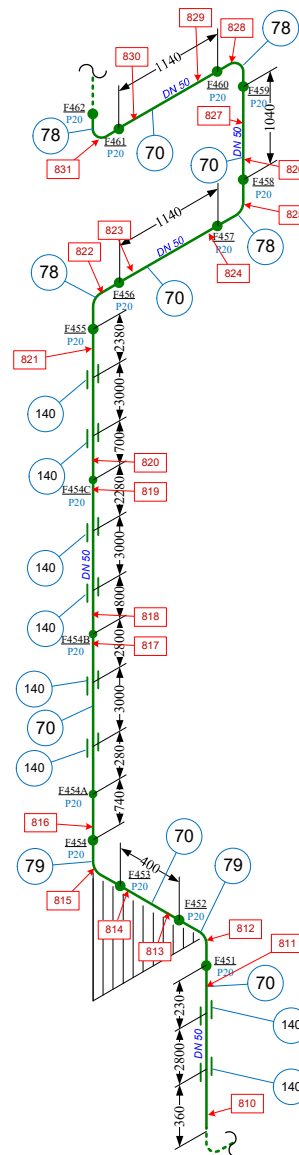
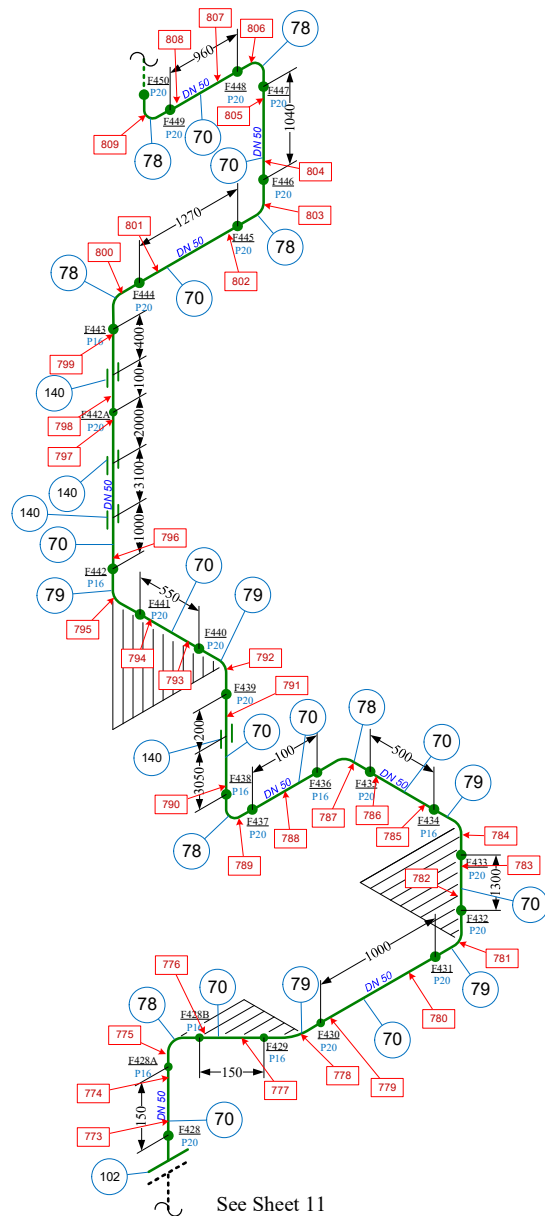


	Oper. medium	AVD	GOST Category	Ba-II	Parameters	Oper. pressure	bar	4,0	Vamzdynas Nr. ./Pipe line Nr.:/ V.365/2-2	Baras./ Section:/ GP-2, Įrenginys FŪ		
			PED Category	1-II		Design pressure		8,0				
						Test pressure		12,0				
	Test medium	Vanduo	Material	p120		°C	Oper. temp.	35	Vamzdynas 365/2-2 į skydines 4-1; 5-1 ir žvakės D-4; D-5	Lapas Page	Lapų Pages	
	Codes	RD.38.13.004-86	Insulation	YES			Design temp.	35				
	Calc. No.	LST EN 13480-1	PWHT	NO			Test temp.	10÷40			9	17
	-	-	Heating	YES								

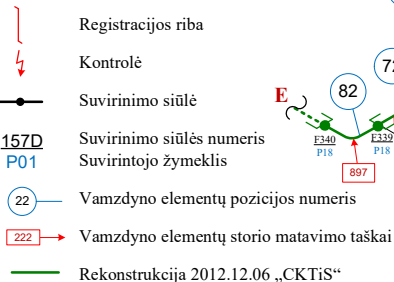





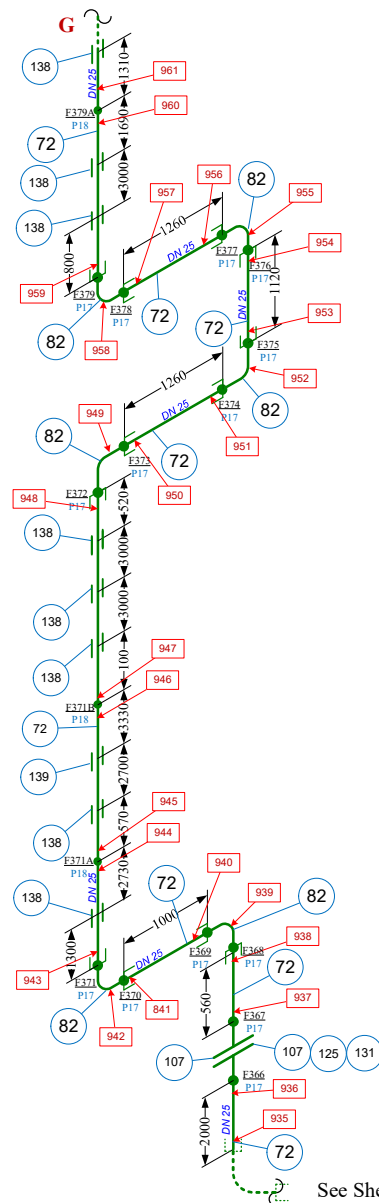
	Oper. medium	AVD	GOST Category	Ba-II	Parameters	Oper. pressure	bar	4,0	Vamzdynas Nr. ./Pipe line Nr.:/ V.365/2-2	Baras:/ Section:/ GP-2, Įrenginys FŪ		
			PED Category	1-II		Design pressure		8,0				
						Test pressure		12,0				
	Test medium	Vanduo	Material	p120		°C	Oper. temp.	35	Vamzdynas 365/2-2 į šildines 4-1; 5-1 ir žvakės D-4; D-5	Lapas Page	Lapų Pages	
	Codes	RD.38.13.004-86	Insulation	YES			Design temp.	35				
	Calc. No.	LST EN 13480-1	PWHT	NO			Test temp.	10÷40				
	-	-	Heating	YES								



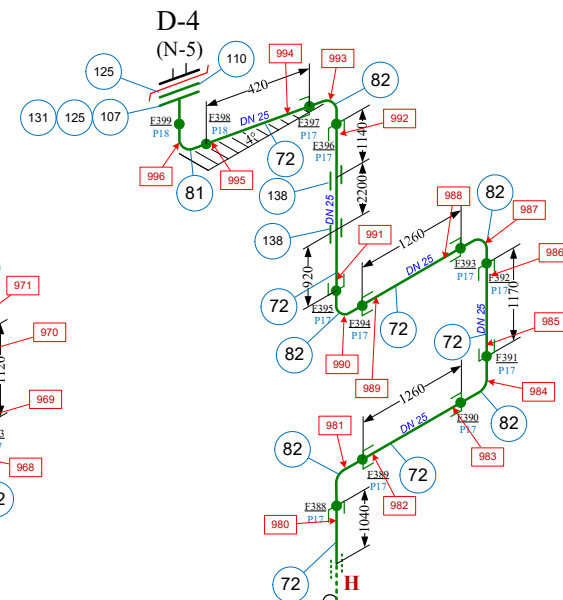
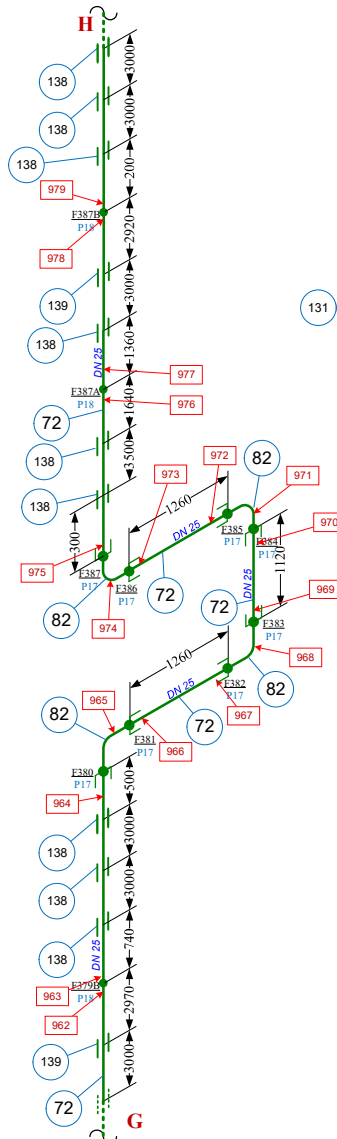
Oper. medium	AVD	GOST Category	Ба-II	Parameters	Oper. pressure	bar	4,0	Vamzdynas Nr. :/Pipe line Nr.:/ V.365/2-2	Baras:/ Section:/ GP-2, Įrenginys FŪ			
		PED Category	1-II		Design pressure		8,0					
Test medium	Vanduo	Material	p120		Test pressure		12,0					
Codes	RD.38.13.004-86	Insulation	YES		Oper. temp.	°C	35	Vamzdynas 365/2-2 į skydines 4-1; 5-1 ir žvakės D-4; D-5			Lapas Page	Lapų Pages
Calc. No.	LST EN 13480-1	PWHT	NO		Design temp.		35				12	17
-	-	Heating	YES		Test temp.		10÷40					



	Oper. medium	AVD	GOST Category	Ба-II	Parameters	Oper. pressure	bar	4,0	Vamzdynas Nr. :/Pipe line Nr.:/ V.365/2-2	Baras:/ Section:/ GP-2, Įrenginys FŪ			
			PED Category	I-II		Design pressure		8,0					
	Test medium	Vanduo	Material	pl20		Test pressure		12,0					
	Codes	RD.38.13.004-86	Insulation	YES		Oper. temp.	°C	35	Vamzdynas 365/2-2 į skydines 4-1; 5-1 ir žvakės D-4; D-5			Lapas	Lapų
	Calc. No.	LST EN 13480-1	PWHT	NO		Design temp.		35				Page	Pages
	-	-	Heating	YES		Test temp.		10÷40				13	17



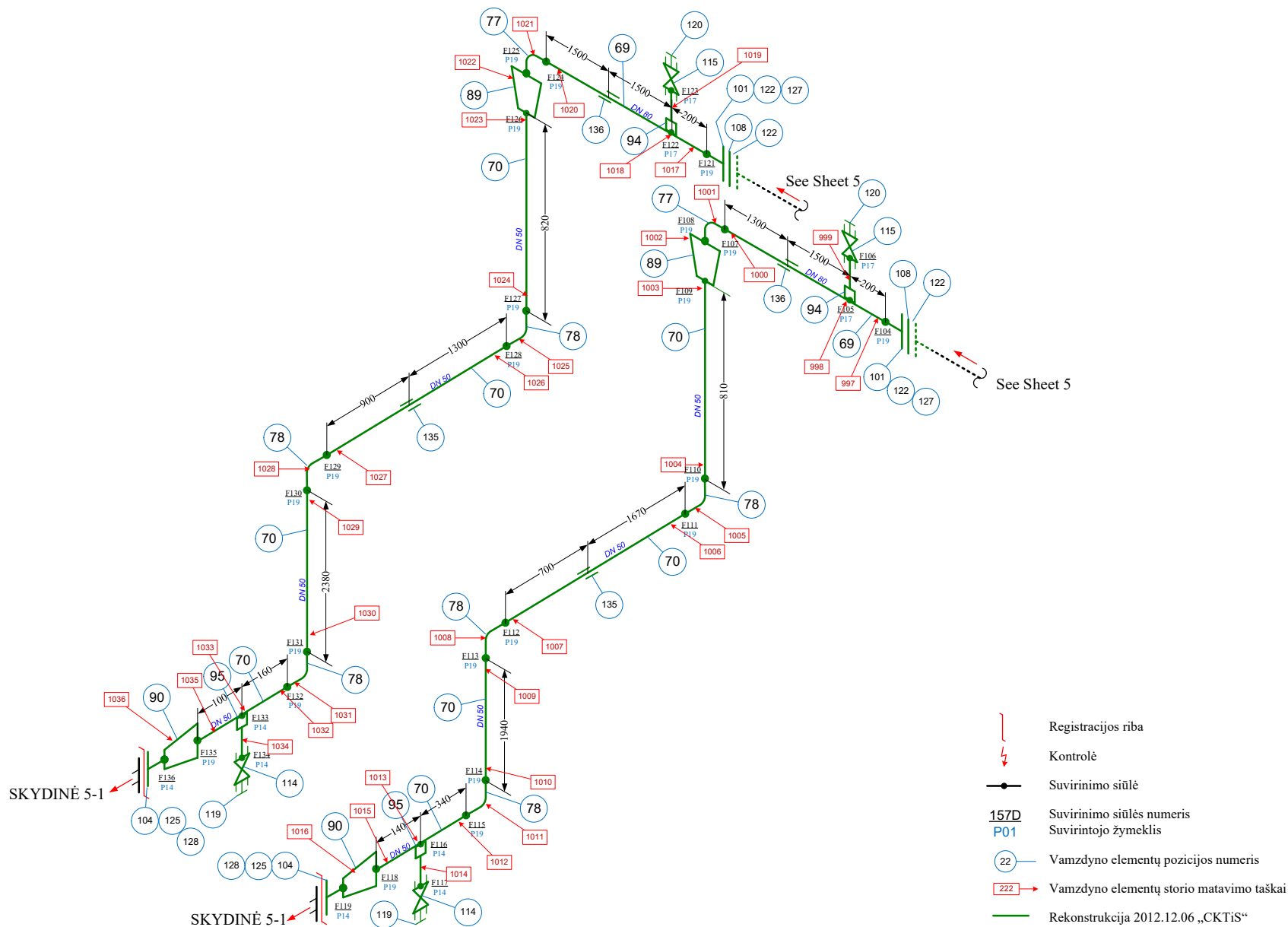
See Sheet 13




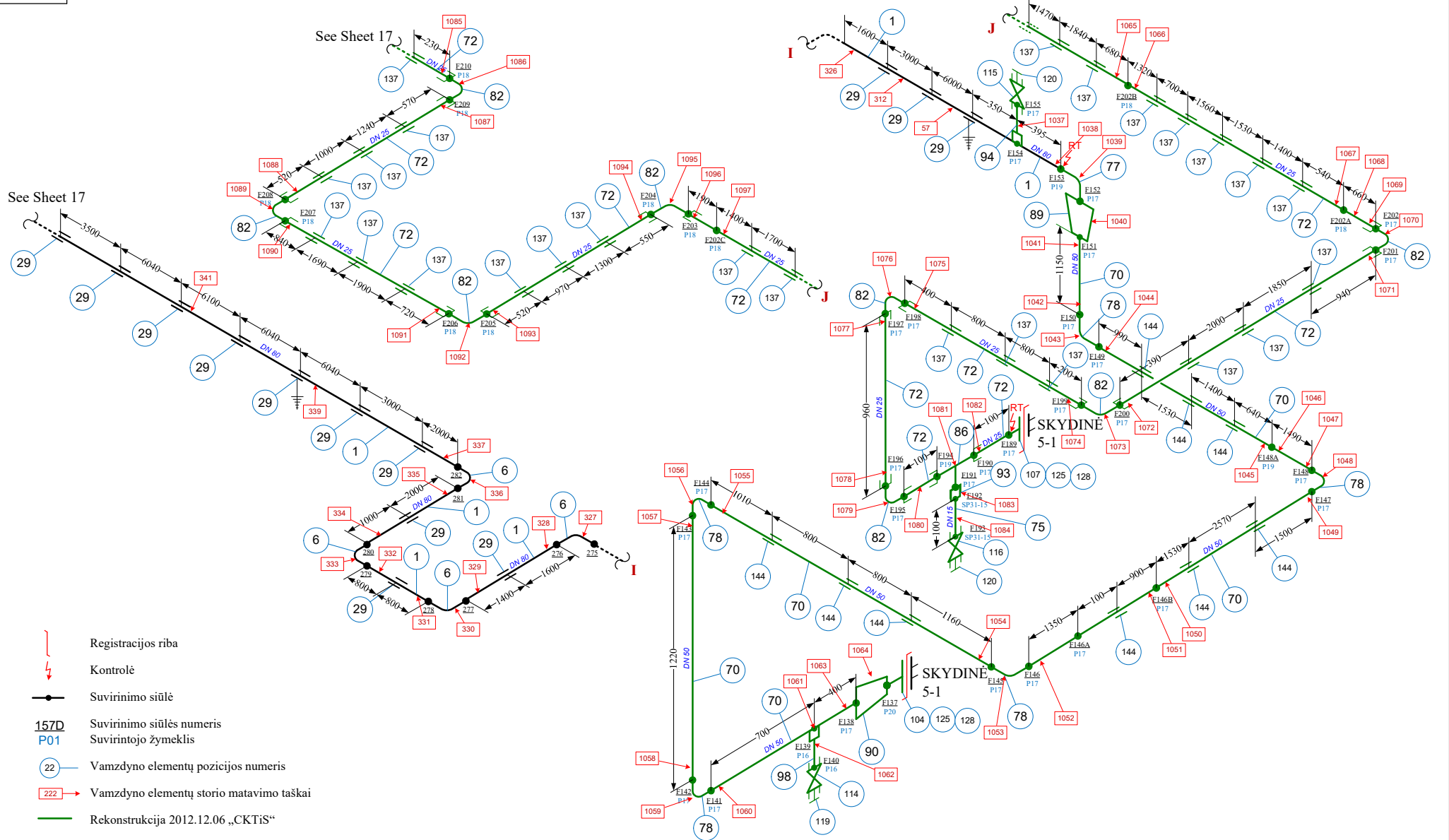
Oper. medium	AVD	GOST Category	Ба-II
Test medium	Vanduo	PED Category	1-II
Codes	RD.38.13.004-86	Material	pl20
Calc. No.	LST EN 13480-1	Insulation	YES
		PWHT	NO
		Heating	YES

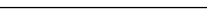
Parameters	Oper. pressure	bar	4,0
	Design pressure		8,0
	Test pressure		12,0
	Oper. temp.	°C	35
	Design temp.		35
	Test temp.		10÷40

Vamzdynas Nr. :/Pipe line Nr.:/	Baras:/ Section:/	Lapas	Lapų
V.365/2-2	GP-2, Įrenginys FŪ		
Vamzdynas 365/2-2 į skydines 4-1; 5-1 ir žvakės D-4; D-5		14	17



	Oper. medium	AVD	GOST Category	Ba-II	Parameters	Oper. pressure	bar	4,0	Vamzdynas Nr. :/Pipe line Nr.:/ V.365/2-2	Baras:/ Section:/ GP-2, Įrenginys FŪ		
			PED Category	1-I		Design pressure		8,0				
	Test medium	Vanduo	Material	pl20		Test pressure		12,0				
	Codes	RD.38.13.004-86	Insulation	YES		Oper. temp.	°C	35	Vamzdynas 365/2-2 į skydines 4-1; 5-1 ir žvakės D-4; D-5	Lapas	Lapų	
	Calc. No.	LST EN 13480-1	PWHT	NO		Design temp.		35		Page	Pages	
	-	-	Heating	YES		Test temp.		10÷40		15	17	



	Oper. medium	AVD	GOST Category	Ba-II	Parameters	Oper. pressure	bar	4,0	Vamzdynas Nr. ./Pipe line Nr.:/ V.365/2-2	Baras./ Section:/ GP-2, Įrenginys FŪ		
			PED Category	1-I		Design pressure		8,0				
						Test pressure		12,0				
	Test medium	Vanduo	Material	p120		°C	Oper. temp.	35	Vamzdynas 365/2-2 į skydines 4-1; 5-1 ir žvakės D-4; D-5		Lapas Page	Lapų Pages
	Codes	RD.38.13.004-86	Insulation	YES			Design temp.	35				
	Calc. No.	LST EN 13480-1	PWHT	NO			Test temp.	10÷40				
	-	-	Heating	YES								

